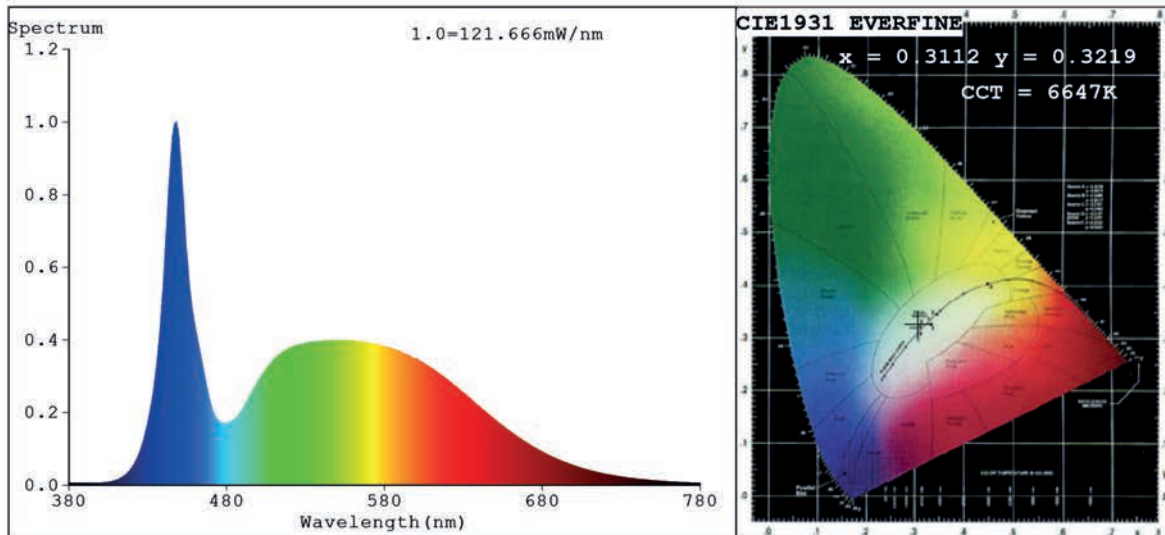


## Spectrum Test Report



### Color Parameters:

Chromaticity Coordinate:  $x=0.3112$   $y=0.3219$   $u'=0.1995$   $v'=0.4642$

CCT=6647K (Duv=0.0002) Dominant WL:Ld =484.7nm Purity=8.4%

Ratio:R=13.8% G=80.9% B=5.2%; Peak WL:Lp=448.1nm FWHM=18.8nm

Render Index:Ra=84.2 CRI=77.9 TM30:Rf=81 Rg=98

R1 =84 R2 =86 R3 =86 R4 =86 R5 =85 R6 =81 R7 =88

R8 =77 R9 =26 R10=66 R11=87 R12=61 R13=84 R14=92 R15=82

### Photo Parameters:

Flux = 3167 lm Eff. : 152.39 lm/W Fe = 10.61 W Scotopic:7051.1 S/P:2.2268

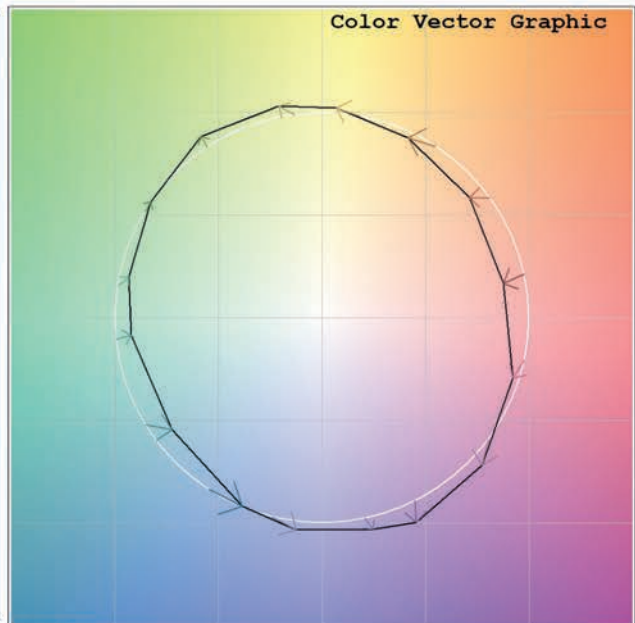
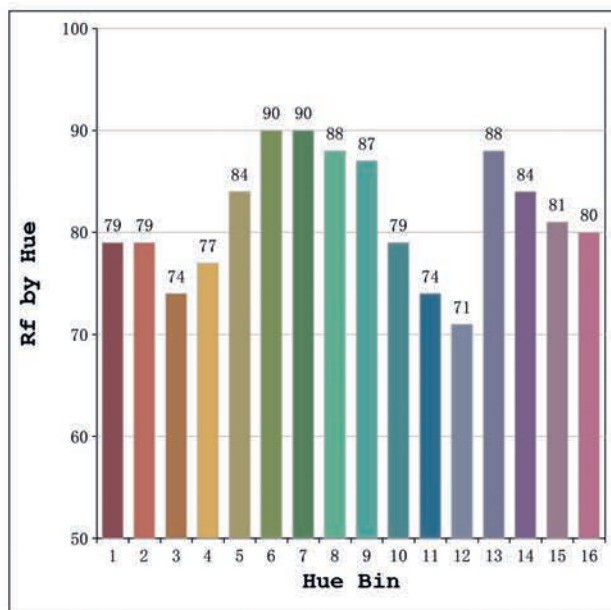
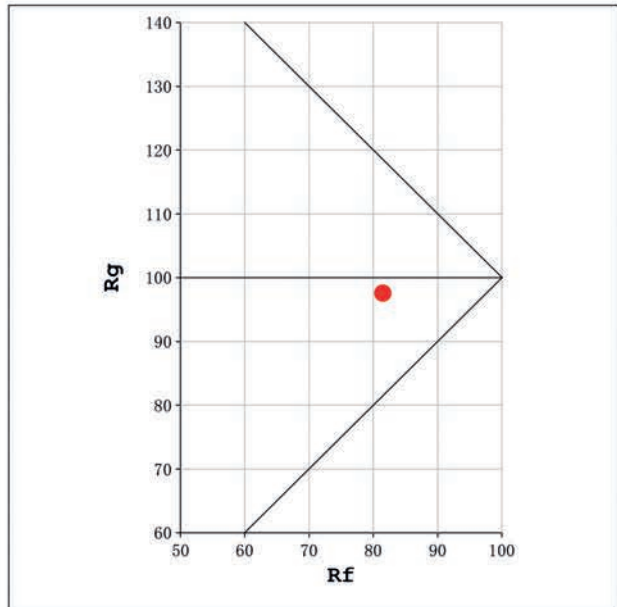
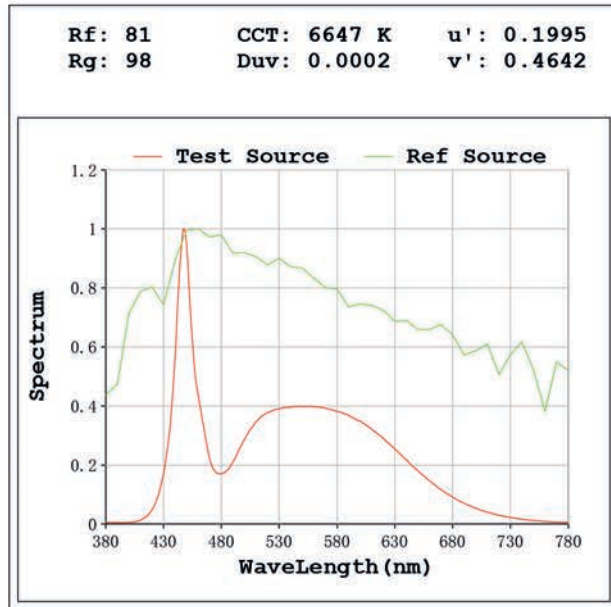
### Electrical parameters:

V = 23.998 V I = 0.8659 A P = 20.78 W PF = 1.000

Status: Integral T = 250 ms Ip = 38108 (58%)

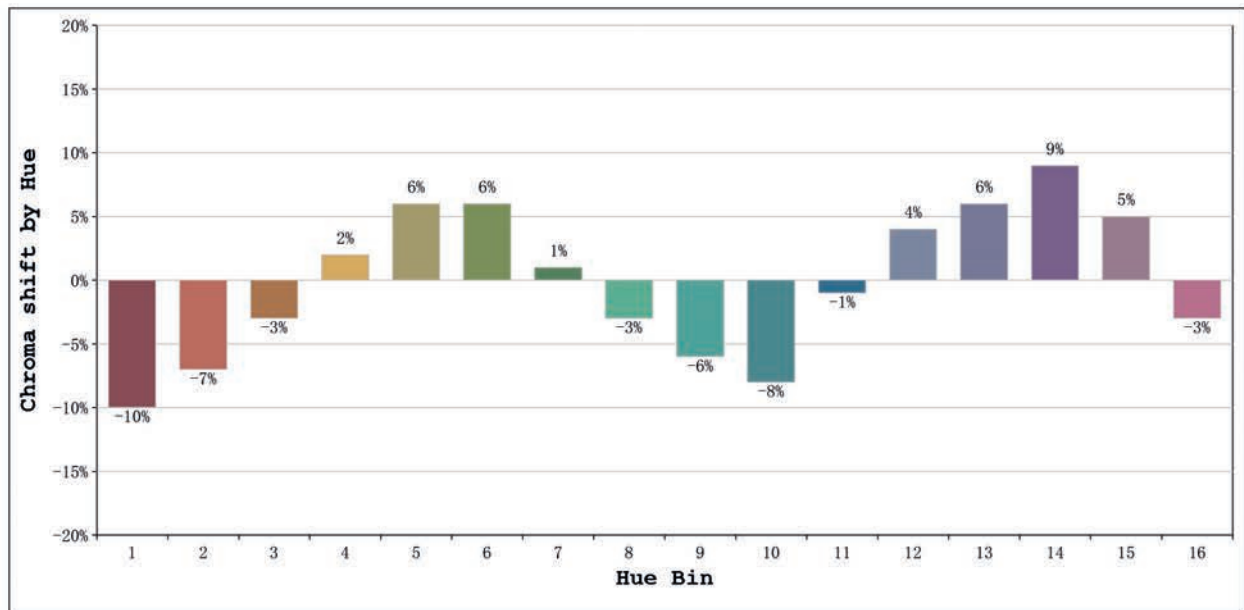
Model:Ecoled Granada 6500K  
 Tester:Sergio Carneros  
 Temperature:20Deg  
 Manufacturer:Luz Negra

Number: 33.027  
 Date:2024-03-14 08:08:40  
 Humidity:50%  
 Remarks:100cm de tira flexible



Model:Ecoled Granada 6500K  
 Tester:Sergio Carneros  
 Temperature:20Deg  
 Manufacturer:Luz Negra

Number: 33.027  
 Date:2024-03-14 08:08:40  
 Humidity:50%  
 Remarks:100cm de tira flexible



|         |                 |    | Graphic shift(%) |     |
|---------|-----------------|----|------------------|-----|
| Hue Bin | Hue Angle       | Rf | Chroma           | Hue |
| 1       | 0.0° - 22.5°    | 79 | -10              | -1  |
| 2       | 22.5° - 45.0°   | 79 | -7               | 6   |
| 3       | 45.0° - 67.5°   | 74 | -3               | 13  |
| 4       | 67.5° - 90.0°   | 77 | 2                | 12  |
| 5       | 90.0° - 112.5°  | 84 | 6                | 7   |
| 6       | 112.5° - 135.0° | 90 | 6                | 0   |
| 7       | 135.0° - 157.5° | 90 | 1                | -4  |
| 8       | 157.5° - 180.0° | 88 | -3               | -4  |
| 9       | 180.0° - 202.5° | 87 | -6               | 0   |
| 10      | 202.5° - 225.0° | 79 | -8               | 9   |
| 11      | 225.0° - 247.5° | 74 | -1               | 18  |
| 12      | 247.5° - 270.0° | 71 | 4                | 13  |
| 13      | 270.0° - 292.5° | 88 | 6                | 3   |
| 14      | 292.5° - 315.0° | 84 | 9                | -4  |
| 15      | 315.0° - 337.5° | 81 | 5                | -11 |
| 16      | 337.5° - 360.0° | 80 | -3               | -9  |

Model:Ecoled Granada 6500K  
 Tester:Sergio Carneros  
 Temperature:20Deg  
 Manufacturer:Luz Negra

Number: 33.027  
 Date:2024-03-14 08:08:40  
 Humidity:50%  
 Remarks:100cm de tira flexible